

PART OF S.W. 1/4 OF SEC. 24, T5N, R1W, S.L.B. & M.
EASTWOOD SUBDIVISION NO. 6

133

LOTS 81-83 & 92-95

IN WEBER COUNTY

SCALE 1"=50'

TAXING UNIT 54

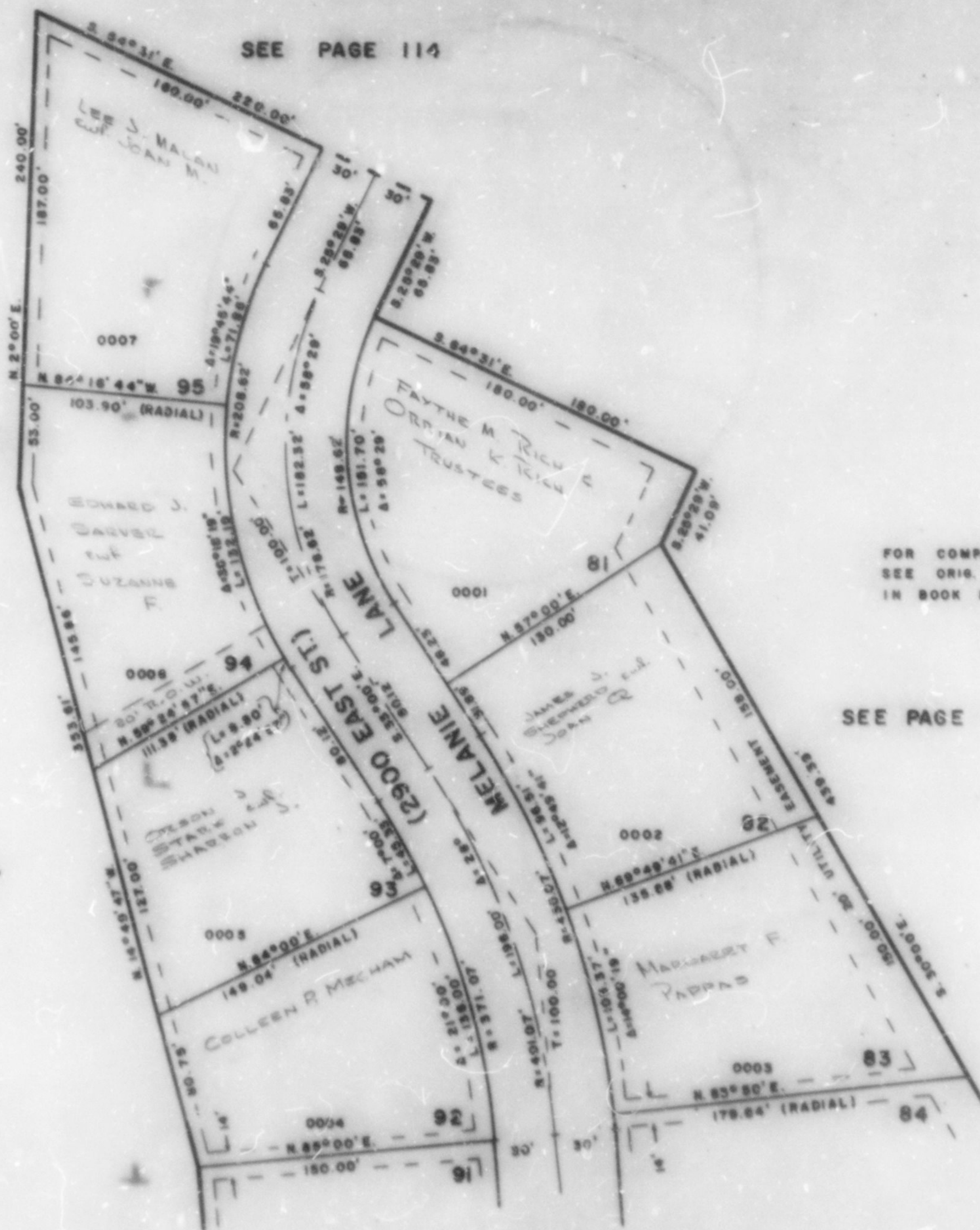
PREFIX 07-133

SEE PAGE 99

FOR COMP. ENG. DATA
 SEE ORIG. DED. PLAT
 IN BOOK 16, PAGE 72

SEE PAGE 99

NOTE:
 7' UTILITY EASEMENTS
 SHOWN BY DASHED LINES,
 EXCEPT WHERE SHOWN



SEE PAGE 134